

## M23 12 Male-C CCW

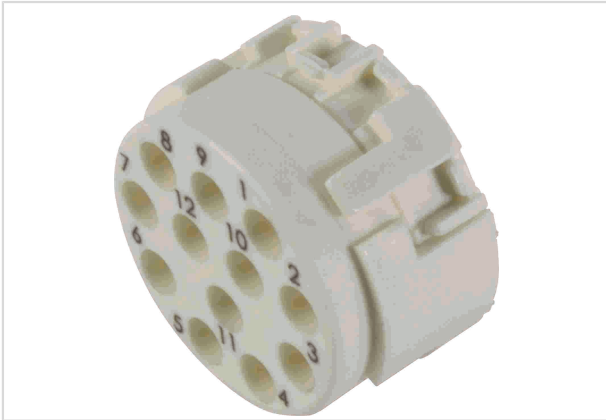


Image is for illustration purposes only. Please refer to product description.

Part number	09 15 112 3011
Specification	M23 12 Male-C CCW

### Identification

Category	Inserts
Series	Circular connectors M23
Identification	Signal
Element	Inserts
Specification	Marking in opposite direction

### Version

Termination method	Crimp termination
Gender	Male
Number of contacts	12
Details	Please order crimp contacts separately. 12x 1 mm

### Technical characteristics

Conductor cross-section	0.08 ... 1.5 mm <sup>2</sup>
Rated current	8 A
Rated voltage	200 V
Rated impulse voltage	2.5 kV
Pollution degree	3
Insulation resistance	>10 <sup>10</sup> Ω
Limiting temperature	-40 ... +125 °C
Mating cycles	≥500



Pushing Performance

## Material properties

Material (insert)	Polyamide (PA)
Colour (insert)	White
Material flammability class acc. to UL 94	V-0
RoHS	compliant
ELV status	compliant
China RoHS	e
REACH Annex XVII substances	No
REACH ANNEX XIV substances	No
REACH SVHC substances	No

## Specifications and approvals

UL / CSA	UL 1977 ECBT2.E235076
----------	-----------------------

## Commercial data

Packaging size	5
Net weight	2.6 g
Country of origin	Germany
European customs tariff number	85366990
eCl@ss	27440223 Contact insert for circular connectors